



**ANTINOZZI ASSOCIATES**  
ARCHITECTURE & INTERIORS

Antinozzi Associates seeks to establish - and maintain - long term relationships with our clients and the communities we serve by providing exceptional personal attention and high-quality professional design services.

Through this commitment, we have the opportunity to provide a creative and intellectually-stimulating environment for our staff, assuring the long term success of the firm.

**BRIDGEPORT** 271 FAIRFIELD AVENUE  
t (203) 377-1300  
f (203) 378-3002

**NORWALK** 301 MERRITT 7  
t (203) 965-5460

[WWW.ANTINOZZI.COM](http://WWW.ANTINOZZI.COM)

## FIRM PROFILE

### OUR FIRM

Founded in 1956, Antinozzi Associates is celebrating nearly six decades as an architectural firm, and almost three decades with a dedicated interior design department. We are a mid-sized full-service architecture and interior design firm, led by the four principals: Paul Antinozzi, AIA (President), George Perham, AIA, IIDA (Vice President), Paul Lisi, AIA (Studio Operations) and Michael Ayles, AIA (Business Development).

It is gratifying to think about the impact upon countless individuals who use our buildings every day. Our approach to fulfilling this responsibility is to listen closely to our clients, design beautifully functional spaces and integrate sustainable design practices. Antinozzi Associates, comprised of architects, interior designers, graphic designers, and marketing/administrative staff, strives to maintain a positive, energetic and collaborative spirit with a talented and diverse group of professionals. It shows in the work we do and in the success we have had.

### LOCATIONS

#### Bridgeport:

In 2007, Antinozzi Associates relocated to the Bijou Theater building in the heart of downtown Bridgeport. Antinozzi Associates extensively renovated and converted the building's former ballroom into an 11,000 SF, two-story open-air workplace with a balcony of architects and interior designers surrounding the main floor studio - once used as a ballroom. This office setting promotes staff collaboration and the exchange of ideas, further stimulating our creativity and innovation. Natural lighting, exposed mechanical systems, and open, collaborative conference areas are featured throughout the office.

#### Norwalk:

Antinozzi Associates opened up a branch office in Norwalk, another step into the firm's expanding services to lower Fairfield County. Located in Merritt 7 Corporate Park, the firm has been retained for on-call design services for the 1.5 million square foot office park.





## FIRM PROFILE

### SERVICES

One of the wonderful aspects of providing design services is that we are always working with successful people - our clients. These clients are comprised of individuals and institutions on the rise and needing new and/or renovated corporate, institutional, commercial, financial, multi-unit residential and religious spaces. What could be better than being a team member with other individuals and organizations enthusiastic and passionate about making a vision into built form and space?

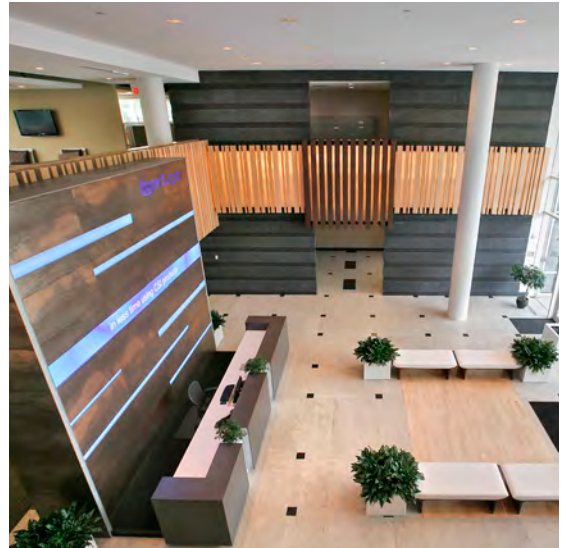
With principal involvement on all of our projects, Antinozzi Associates has been a leader in architectural and interior design of the corporate, commercial, institutional, multi-unit residential, financial and religious projects.

### ADDITIONAL SERVICES

In addition to architectural and interior design services that includes sustainable design, we provide Pre-Referendum Services, Feasibility Studies, Master Planning, Programming, Project Management, Site Analysis, Space Planning, Consultant Coordination, LEED in Certification, Commissioning and Consulting. By providing these expanded services, we have become experts in designing facilities that combine the practical and aesthetic design components, resulting in well-crafted buildings.

### TEAM APPROACH

As architects, we recognize that one of our most significant roles is to manage a process that may take years to complete and includes hundreds of individuals. We are Team Leaders with the responsibility of ensuring efficient utilization of all resources. Proper selection and management of engineers, construction managers, and consultants of all types are a key factor to the success of any project. We are experts in establishing and maintaining strong oversight and management of this process. Our teaming approach and access to a wide range of consultants capture the best available expertise. We also work side-by-side with consultants selected by our clients, maintaining previously established strong rela-



## FIRM PROFILE

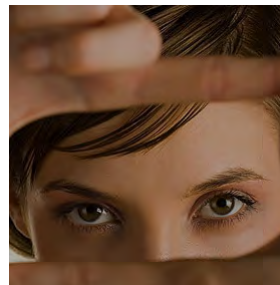
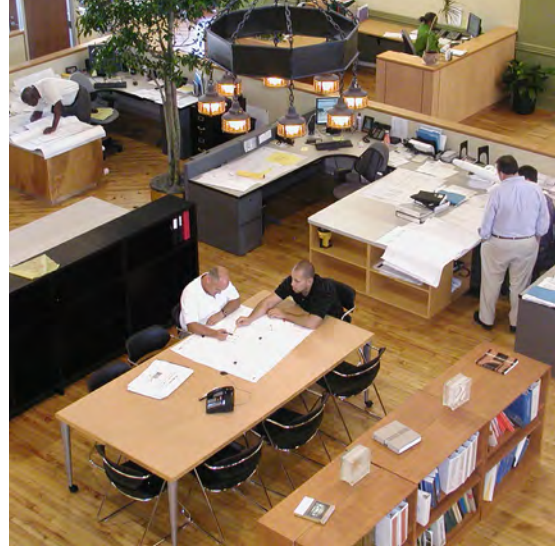
tionships. Regardless, our knowledge and experience enable us to coordinate all disciplines involved with your project.

### KNOWLEDGE

Learning is a life-long responsibility for architects and interior designers, therefore the entire Antinozzi Associates staff has the opportunity to learn and work on diverse cross sections of building types at all levels. The principals of the firm strongly encourage staff to get involved in volunteer and community organizations to better communicate and understand the needs of our society from a different perspective.

### PHILOSOPHY

Our overriding philosophy as a firm is not just to be architects or interior designers, but to provide clients with 'Design Leadership'. In every client we take on, in every project we are involved with, in every community effort we contribute to, we ask ourselves, "how are we providing Design Leadership for our clients, consultants or community?" At Antinozzi Associates, we believe that we must focus our design leadership on four areas of expertise - Knowledge, Collaboration, Sustainability and Vision. Excelling in these areas is what sets us apart.







**PRINCIPAL AND ASSOCIATE RESUMES**



# PAUL ANTINOZZI, AIA

## PRINCIPAL - IN - CHARGE, PRESIDENT

### EDUCATION

- Bachelor of Science in Architecture,  
University of Notre Dame

### REGISTRATION

- Licensed Architect - Connecticut, New York, New Jersey,  
Rhode Island, and Commonwealth of Massachusetts
- Registered Interior Designer - Connecticut

### REPRESENTATIVE EXPERIENCE

- University of Bridgeport - Library, Student Center, Business  
School, Schine Residence Hall, and many other campus facilities
- Jewish Theological Seminary, New York, NY
- CREC Medical Professions and Teacher Preparation  
Magnet Middle/High School, New Britain
- Platt High School, Meriden
- Eli Whitney Technical High School, Hamden
- Roosevelt Elementary School, Bridgeport
- Harding High School, Bridgeport
- West Haven High School, West Haven
- Oxford High School, Oxford
- Howell Cheney Technical High School, Manchester
- Connecticut AeroTech School at Brainard Airport, Hartford
- Geraldine Johnson Elementary School, Bridgeport
- Spring Glen Elementary School, Hamden
- Thomas Edison Magnet Middle School, Hamden
- Scotts Ridge Middle School, Ridgefield
- 262 Fairfield Avenue, Bridgeport
- Downtown North Apartments, Bridgeport
- 323 Fairfield Avenue, Bridgeport

### PROFESSIONAL/COMMUNITY AFFILIATIONS

- University of Bridgeport - Board of Trustees
- Downtown Special Services District,  
Chairman: Urban Planning Initiatives Sub-Committee
- Bridgeport Regional Business Council,  
Co-Chair: Economic Development Sub-Committee
- Housatonic Community College Foundation  
Board of Directors, Former President
- American Institute of Architects (AIA) Committee on Design
- National Council of Architecture Registration Boards

Paul Antinozzi has been a practicing architect for over 40 years. His enthusiasm, sincerity, and unfettered creativity enhance the atmosphere and personality of the firm. Over the years, Paul has established a collaborative culture within the firm, believing that a fluid mix of teamwork and individual talent produces the quality results the firm is known for. This successful concept has kept a long list of repeat clients coming back for design services over the past 40 years.

Paul Antinozzi guides the project direction, monitors critical issues and concerns, and defines these issues for the entire in-house team. It is well-known by clients of the firm that his involvement is maintained throughout the entire project to ensure that this mandate is carried out by the project team.

Besides his leadership of Antinozzi Associates, Paul is a very active member of the community. From serving on his town's building committee for a new fire station, to being President of a local community college foundation, his passion and love for the profession extends well beyond the office.





# GEORGE J. PERHAM, AIA, IIDA

PRINCIPAL - IN - CHARGE , VICE PRESIDENT

## EDUCATION

- Associate's Degree, Norwalk State Technical College

## REGISTRATION

- Licensed Architect - Connecticut
- Registered Interior Designer - Connecticut

## REPRESENTATIVE EXPERIENCE

- Onyx Equities - 1311 Mamaroneck, White Plains, NY
- Merritt 7 Corporate Park, On-Call Services, Norwalk
- Davis Companies - Various Locations in CT
- Webster Bank - Various Locations in CT, MA, RI, NY
- Quinnipiac Bank & Trust, Hamden
- Bankwell, Norwalk and Fairfield
- EACM Advisors LLC, Norwalk
- International Brotherhood of Electrical Workers (IBEW)  
New Headquarters, Monroe
- Bridges - A Community Support System, Milford
- New Alliance Bank / First Niagara Bank, Stamford
- CooperSurgical, Trumbull
- Ryan Partnership, Wilton
- Cardiology Associates, Danbury
- Advanced Derm Care, Danbury
- Connecticut Neck & Back Specialists, Danbury
- 50 Hazel Road Condominiums, Cheshire
- Newtown Savings Bank - Various Locations in CT
- Naugatuck Savings Bank, Meriden, Shelton
- People's United Bank - Various Locations in CT
- Union Savings Bank, Southbury and Danbury
- Savings Bank of Danbury
- Multiple term 'On-Call' Contracts:  
IBM, NASDAQ, and Unilever

## PROFESSIONAL/COMMUNITY AFFILIATIONS

- International Interior Design Association (IIDA)
- Member, REFA and NAIOP
- American Woodwork Institute (AWI)
- American Institute of Architects (AIA)
- University of Hartford Construction Institute,  
Fairfield County Task Force
- Stratford YMCA, Board of Managers  
Annual Strong Kids Campaign, Chairman
- Stratford Redevelopment Agency

George Perham has over 40 years of experience in both architecture and interior design and has been a Principal with the firm since 2000. He is the Principal-in-Charge of the firm's corporate and interior design projects.

A successful building design for George is one in which 'form', both inside and out, beautifully (and naturally) follows 'function'. Besides the diversity of his design talent, George brings to the firm the deep knowledge of someone who knows the field, literally, from the ground up. He has supervised hundreds of projects from initial site evaluation, programming and conceptual design phase, through construction completion. George's unique ability translates exterior to interior seamlessly - his focus is always on the "whole picture" and not just architecture OR interior design.

George's extensive experience in interior design helped establish the firm's well-known interior design capabilities. This expertise recently provided the firm the opportunity to open a branch office at the Merritt 7 Corporate Park in Norwalk. The focus of this branch is to provide on-call services for the 1.5 million square foot park. By being part of the Corporate Park Family, tenants and management can reach the office easily on site without having to call or arrange a meeting. Additionally, it allows our firm to become more active in the lower Fairfield and Westchester Counties.



## F. MICHAEL AYLES, AIA

PRINCIPAL, BUSINESS DEVELOPMENT

### EDUCATION

- Bachelor of Architecture, Roger Williams University

### REGISTRATION

- Licensed Architect - Connecticut, Maine
- Registered Interior Designer - Connecticut
- NCARB Certification

### REPRESENTATIVE EXPERIENCE

#### PUBLIC SCHOOL PRE-REFERENDUM/APPROVALS

- Regional District #14 - Bethlehem, Woodbury (Passed)
- Guilford High School (Passed)
- West Haven High School Addition/Renovation (Approved)
- Stratford Academy / Honeyspot House (Approved)
- Chatfield-LoPresti Elementary School, Seymour (Passed)

#### CLIENTS

- Webster Bank
- University of Bridgeport
- Davis Marcus Partners
- U.S. Army Corps of Engineers - Louisville District
- People's United Bank
- Yale New Haven Health Services, New Haven
- Bridgeport Public Library

### PROFESSIONAL/COMMUNITY AFFILIATIONS

- American Institute of Architects (AIA):
- Center for Civic Leadership, 2009-present (2012 Chair)
- Committee on Leadership Education, 2006-2008 (2008 Chair)
- Young Architects Forum, 1999-2005 (2004 Chair)
- National Architectural Accreditation Board (NAAB) 2014 Visiting Team, AIA Representative - Cal-Poly, Pomona
- Society for Marketing Professional Services (SMPS)
- Connecticut Building Congress (CBC)
- NCARB Intern Development Program - State Coordinator
- ACE Mentor Program of Connecticut - Board of Directors
- Mentoring Institute of Coastal Fairfield County
- Town of Guilford - Board of Finance (Elected Position)
- Soundview Family YMCA Board of Managers, 2002-2012

Michael Ayles has been with Antinozzi Associates since 1994 and became a Principal of the firm in 2008. An assertive, proactive individual with the firm, as well as the profession as a whole, Mike advanced quickly through the firm ranks as an Architect and Project Manager for many of our educational and commercial projects.

Additionally, Mike was promoted to the position of Director of Business Development after holding the role of Director of Operations for two years. He is responsible for all of the firm's marketing efforts and oversight of the firm's business development plan and strategy. Mike also leads all of the firm's pre-referendum strategies for school districts requiring town and/or voter approval.

Mike's community service and leadership roles in the profession are truly remarkable. Based on this involvement, he has been honored with awards from the AIA (Young Architect Award), business publications ("40 Under 40" *Fairfield County Business Journal*, *Building Design + Construction*), and non-profit organizations (Governor's Prevention Partnership Corporate Mentoring Hall of Fame).

In addition, Mike has participated as a moderator, panelist, lead speaker, and facilitator at local, regional, and national conferences. Topics include the practice of architecture, marketing, business development, leadership, and mentoring.





# PAUL A. LISI, AIA, BCEO

## PRINCIPAL, ARCHITECTURAL STUDIO

### EDUCATION

- Bachelor of Architecture,  
New York Institute of Technology
- Associate's Degree in Architecture,  
Norwalk State Technical College

### REGISTRATION

- Licensed Architect - Connecticut
- Licensed Building Official - Connecticut

### REPRESENTATIVE EXPERIENCE

- Housing Authorities of Bridgeport, Stratford,  
and Newington
- Town of Trumbull, On-Call Services
- Stratford Fire Headquarters, Stratford
- Orville H. Platt High School, Meriden
- Roosevelt Elementary School, Bridgeport
- Geraldine Johnson Elementary School, Bridgeport
- South End Elementary School, Bridgeport
- Spring Glen Elementary School, Hamden
- Scotts Ridge Middle School, Ridgefield
- Stratford Academy / Honeyspot House Feasibility Study
- Regional School District #14 Feasibility Study
- Connecticut AeroTech School, Hartford
- Newington VA Dental Clinic Renovations
- Christ & Holy Trinity Classroom / Hall Addition, Westport
- FBI Secure Work Environment Project, New Haven
- University of Bridgeport - Fones Dental School of Hygiene

### PROFESSIONAL/COMMUNITY AFFILIATIONS

- International Code Council Member
- American Institute of Architects (AIA) Member
- AIA / CT Building Performance & Regulation Committee
- Zoning Board of Appeals Vice-Chair, Town of Monroe

Paul Lisi has been with Antinozzi Associates for almost 25 years. An assertive, proactive individual, Paul's communication and technical skills quickly advanced him through the ranks of the firm to become Principal and Director of the Architectural Studio in 2008. On many of our educational projects, Paul will lead some of the firm's larger projects as Senior Project Manager or Principal-in-Charge.

Of his many job functions, Paul is responsible for ensuring the coordination and communication of the architectural, interior design and production staff, consulting engineers, specialty consultants, and project managers to keep projects within budget and on schedule.

Paul also manages the firm's value engineering process, quality control procedures, and code compliance review. When required, Paul will lead efforts to assist clients (and staff) with the coordination of designated owner representatives, cost estimators, town building committees, and other Town/State agencies.

In 2006, Paul became certified as a Licensed Building Official by the Connecticut Department of Public Safety. Since this achievement, Paul regularly attends educational seminars with local and State regulatory officials, and is typically involved with all of the firm's projects to address issues relating to State Building Codes. He is a member of the International Code Council (ICC) and the AIA/CT Building Performance & Regulations Committee.



## DAVID FERRIS, ASSOC. AIA

ASSOCIATE, SENIOR PROJECT MANAGER

### EDUCATION

- Bachelor of Architecture, Hampton University

### REPRESENTATIVE EXPERIENCE

- Eli Whitney Technical High School, Hamden
- Roosevelt Elementary School, Bridgeport
- Harding High School, Bridgeport
- West Haven High School, West Haven
- CREC Medical Professions and Teacher Preparation Magnet Middle / High School, New Britain
- CCSU Window Replacement Project, New Britain
- Geraldine Johnson Elementary School, Bridgeport
  
- Newark Valley Central School District, Newark Valley, NY
- Candor Central School District, Candor, NY
- Mayfield Central School District, Mayfield, NY
- Semi-Conductor Laser International, Binghamton, NY
- Morrisville Community Church, Morrisville, NY
- Government House Renovations, St. Croix, USVI
- Virgin Islands Department of Health, New Ingebord
- Nesbitt Clinic, St. Croix, USVI
  - *previous experience*

### PROFESSIONAL/COMMUNITY AFFILIATIONS

- American Institute of Architects, Associate Member

For ten years, David Ferris has been a key member of the Antinozzi Associates team. He brings his many years of prior professional experience and project management capabilities to our firm and staff. David's passion for the architecture profession, as well as his charismatic personality, exemplifies his role as Project Manager. Not only does David excel in managing complicated public school projects, he leads efforts in organizing the development of program and budget development, focusing design team responsibilities, planning construction logistics/phasing, and public relations.

David has proven his leadership and technical abilities on numerous levels, from the minute details to the big picture. His capability and competency in leading complex projects from their initial conception through construction completion is seen throughout.

Outside the office, David serves on various Mentor Programs and Executive Boards for several Community and Civil Organizations.

In 2012, David Ferris earned the title of Associate Project Manager.



# JOSE A. IMERY

ASSOCIATE, SENIOR PROJECT MANAGER

## EDUCATION

- Bachelor of Architecture,  
Universidad Central de Venezuela,  
Caracas, Venezuela

## REGISTRATION

- C.I.V. - Caracas, Venezuela

## REPRESENTATIVE EXPERIENCE

- Webster Bank - Various Locations in CT, MA, NY, RI
- Newtown Savings Bank - Various Locations in CT
- Savings Bank of Danbury, New Milford, CT
- International Brotherhood of Electrical Workers (IBEW)  
New Headquarters, Monroe, CT
- Bridges A Community Support System, Milford, CT
  
- New York Sports Club - White Plains, NY
- Credit Swiss First Boston - London, England
- Scholastic Books - New York, NY
- ESPN Magazine - New York, NY
- Cravath, Swaine & Moore - New York, NY
  - *previous experience*

## PROFESSIONAL/COMMUNITY AFFILIATIONS

- Antinozzi Quality Assurance Committee, Chair

Jose joined Antinozzi Associates in 2006. His design and management experience dates back to 1994 when he began with one of the largest design firms in the world, Gensler. While there, he successfully managed numerous corporate and commercial clients and subsequently earned the title of Technical Coordinator. He worked in both the New York City and London offices and was later appointed as a Gensler Associate in 2002 upon his return to the United States.

As Chair of our firm's Quality Assurance Committee, his responsibilities include developing drawing review standards, filing standards, and maintaining quality control compliance on projects of all sizes. His breadth of knowledge and insight has helped guide project teams from the schematic design process through final project closeout.

Since successfully taking control of our Webster Bank projects upon joining the firm, Jose continues to shine as one of our leading project managers. Over the last decade, Jose has exemplified an unwavering passion and enthusiasm for both architecture and interior design.

In 2012, Jose was named an Associate of the firm.





## KEVIN J. MATIS, LEED-AP BD +C

ASSOCIATE, PROJECT MANAGER

### EDUCATION

- Bachelor of Architecture, Roger Williams University
- Associates in Architecture Technology, Norwalk Community Technical College

### REGISTRATION

- U.S. Green Building Council LEED Accreditation

### REPRESENTATIVE EXPERIENCE

- West Haven High School, West Haven
- Harding High School, Bridgeport
- Orville H. Platt High School, Meriden
- Roosevelt Elementary School, Bridgeport
- South End Elementary School, Bridgeport
- Howell Cheney Technical High School, Manchester
- Thomas Edison Magnet Middle School, Meriden
- Scotts Ridge Middle School, Ridgefield
- Christ & Holy Trinity Parish Hall Addition
- Royal Bank of Scotland, Stamford
- Webster Bank, Various Locations in CT, NY, RI, MA
- People's United Bank, Various Locations in CT
- Cooper Surgical, Trumbull
- Davis Marcus Partners, Wilton
- Ryan Partnership, Wilton
- IBM, Various Locations in CT
- Unilever, Trumbull
- Citizens Bank, East Hampton

Kevin Matis has been with Antinozzi Associates since his graduation from architectural school in 1998. Kevin has proven himself to be a great asset to the firm with his diverse talents ranging from project management, to the Building Information Modeling (BIM) process. Kevin is instrumental in developing a wide variety of projects, both technically and logistically, from the early stages of design through construction administration. His efficient management skills, ability to coordinate various aspects of a project, and calm demeanor is truly appreciated by our clients.

As IT Manager of the firm, Kevin's vast knowledge keeps the staff up to date with the latest hardware, software and networking technology. He also provides CAD/Revit training.

Kevin's commitment and passion to the design industry was further proven in early 2009 when he passed the U.S. Green Building Council's LEED Accreditation Exam. Kevin was instrumental in leading our Wilton Corporate Park office campus projects, totaling 325,000 SF, to LEED Gold Certification.

In addition to all his achievements, Kevin earned the title of Associate in 2012.



# PATTI MCKEON, NCIDQ

SENIOR ASSOCIATE, REGISTERED INTERIOR DESIGNER

## EDUCATION

- Interior Design Certificate Program, Paier College of Art
- Bachelor of Science, Business Management, Providence College

## REGISTRATION

- NCIDQ Certification # 11749
- Registered Interior Designer - Connecticut

## REPRESENTATIVE EXPERIENCE

- 323 Fairfield Avenue Apartments, Bridgeport
- Kuchma Corporation, Bridgeport
- The Jewish Theological Seminary Library, New York
- Winstanley Enterprises, Various Locations in CT
- Bridges: A Community Support System, Inc., Milford
- Connecticut Distributors, Stratford
- Stratford Fire Headquarters (FF&E), Stratford
- Quinnipiac Bank & Trust, Hamden
- Savings Bank of Danbury, Danbury
- Citizens Bank, East Hampton
- Royal Bank of Scotland, Bridgeport
- Newtown Savings Bank, Various Locations in CT
- Naugatuck Valley Savings Bank, Hamden
- Forstone Capital, Bridgeport
- CREC Medical Professions and Teacher Preparation Magnet Middle / High School, New Britain
- University of Bridgeport, On-Call Architectural Services
- Eli Whitney Technical High School, Hamden
- Spring Glen Elementary School, Hamden
- Geraldine Johnson Elementary School, Bridgeport
- South End Elementary School, Bridgeport
- Roosevelt Elementary School, Bridgeport
- Oxford High School, Oxford

## PROFESSIONAL/COMMUNITY AFFILIATIONS

- Connecticut Coalition of Interior Designers (CCID), VP of Programming; Board Member
- Amity Middle School - Bethany Campus, Tools for Schools Committee Member

Patti McKeon has been the firm's primary institutional facility Interior Designer since joining Antinuzzi Associates in 1998.

Patti's educational background and extensive interior design experience enables her to excel in translating each client's requirements into innovative plans using functionality and aesthetic knowledge within the established program. Patti is also Revit-proficient and has extensive experience in construction documents and detailing.

Patti's leadership ability and design experience makes her a key firm asset in successfully executing interior spaces. These qualities made it an easy decision to assign Patti the title of Senior Associate in 2012.

Patti's skills and knowledge extend beyond the workplace. She is VP of Programming for the Connecticut Coalition of Interior Designers (CCID) and was responsible for initiating the need for Revit training courses to interior designers in Connecticut. She is also a member of the Tools for Schools Committee at Amity Middle School in Bethany, and a mentor with the Connecticut Chapter of the American Society of Interior Designers (ASID) for their career nights. In addition, she lends her time to local universities and colleges by mentoring student interns.



# STEPHANIE BARBAGIOVANNI, NCIDQ

SENIOR ASSOCIATE, REGISTERED INTERIOR DESIGNER

## EDUCATION

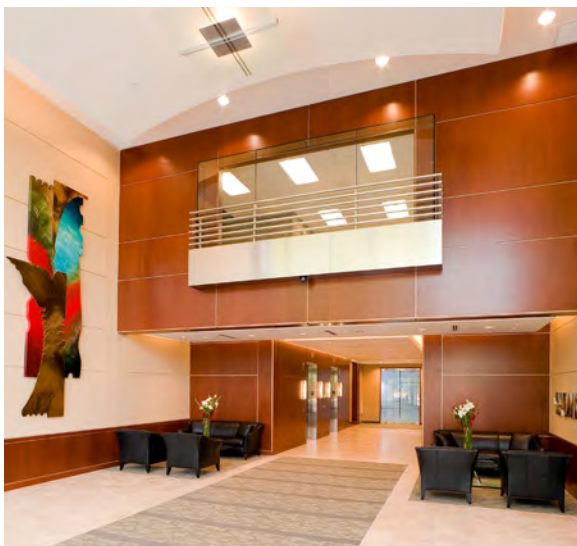
- Bachelor of Arts in Interior Design,  
University of New Haven

## REGISTRATION

- NCIDQ Certification # 028238
- Registered Interior Designer - Connecticut

## REPRESENTATIVE EXPERIENCE

- Onyx Equities - 1311 Mamaroneck, White Plains, NY
- Baywater Properties
- Merritt 7 Corporate Park-On-Call Services, Norwalk  
Connecticut Properties
- The Davis Companies, Connecticut Properties
- Bottomline Technologies, Wilton
- EACM Advisors
- Department of Veteran Affairs (Newington Facility),  
Dental Suite Upgrades
- Cooper Surgical Headquarters
- Wilton Corporate Park Office Renovations
- University of Bridgeport - Fones School of  
Dental Hygiene
- Bridgeport Hospital - Foundation Offices
- Cardiology Associates
- Advanced DermCare
- The Hawley Corporation
- 50 Hazel Road Condominiums
- Geraldine Johnson Elementary School



Stephanie Barbagiovani joined Antinozzi Associates in 2003 immediately upon graduation and a summer internship. Stephanie works closely with our clients, in-house architectural staff, outside consultants, and product vendors to create interior spaces that are functional, aesthetically pleasing, and compliant with client requirements. She has gained extensive experience in the design and planning of corporate spaces, as well as several of our educational and medical-based projects.

Stephanie's extensive research in color and color theory has contributed on every project she has worked on, including a medical marketing initiative several years ago where she was one of the lead team members in contributing informational content. Along with George Perham and our marketing department, this medical marketing campaign won both state and national Society of Marketing Professional Services (SMPS) awards.

Due to Stephanie's eagerness to grow and strong interior design capabilities, she became the manager and lead interior designer at our branch office at the Merritt 7 Corporate Park in Norwalk. The focus of this branch is to provide on-call tenant design services for the 1.5 million square foot park. Additionally, Stephanie has become more active with the firm's business development and other professional efforts in lower Fairfield and Westchester County.

Along with her involvement with the commercial real estate development association (NAIOP) and the Real Estate Finance Association (REFA), Stephanie's leadership and design ability earned her the title of Senior Associate in 2014.





Corporate design embodies a company's culture and its brand identity. A well-designed environment adds to employee satisfaction, increases productivity, and sets the stage for success.

Civic design requires careful consideration of the architectural legacy we want to create. Working with local, state, and federal governments, we design institutions that complement the locale.

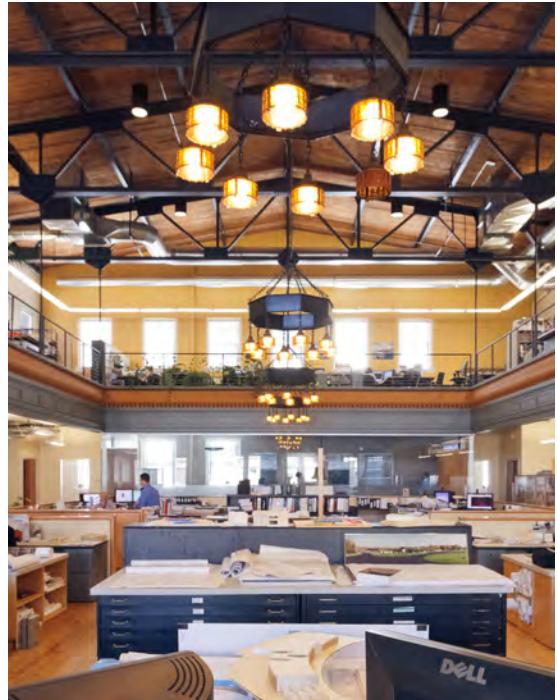
**Location:** Bridgeport, Connecticut  
**Area:** 11,700 Square Feet  
**Completed:** 2007

This historic building, constructed in 1908, was designed as an entertainment venue in a 16th century Italian palazzo style. Intended as both the first Picture Theater in the United States along with an upper-level ballroom, the building became vacant and unused mid-century as movie theaters grew larger and ballroom dancing became less popular.

The approach for the renovation of the ballroom as a professional architectural and interior design studio was to restore its original architectural elegance and simplicity. Due to the building's vacancy, uniqueness in use, and upper level location, this space never became a victim of renovation. Details, such as the original suspended chandeliers and cast iron balustrade on the upper level mezzanine, remained in place and had been painted in an all-black canvas. Once the black paint was removed from the chandeliers, the original warm amber glow of the lamp shades were revealed and became the basis of the office's new color scheme.

Despite challenges to integrate these design goals into a contemporary design studio, one critical issue was the tiered balcony level. To capture this as usable space, the balcony floor had to become level, which required a new railing system of steel pipe rails and aircraft cable above the original cast iron balustrade. This design solution provided visitors and staff with an open vista of both floors with as little obstruction as possible. Another design goal was to maintain the space's volume, accomplished by providing as much natural lighting as possible and utilizing low landscape furnishings. Ductwork, piping and lighting was carefully designed and woven into the existing structural roof trusses.

This renovation resulted in a 12,000 SF, two-story open-air workplace promoting staff collaboration.





## ANTINOZZI ASSOCIATES | NORWALK OFFICE

**Location:** Norwalk, Connecticut  
**Area:** 800 Square Feet  
**Completed:** 2012

Based on our firm's success in designing Class "A" office space for developers and corporate clients, it provided us an opportunity to open a branch office in 2012 at the Merritt 7 Corporate Park in Norwalk. The firm was retained by new Merritt 7 property management companies, Marcus Partners and Clarion Partners, to provide on-call tenant design services for the six-building, 1.5 million SF office park. Located in the plaza level of Building 301, Antinozzi Associates' branch office is easily reachable by both tenants and management throughout the complex. In addition, the firm's Norwalk office now allows active community outreach into lower Fairfield County, as well as an expansion of the firm's interior design services into all of lower Fairfield and Westchester Counties.

Senior Associate and Registered Interior Designer Stephanie Barbagiovanni leads this branch office along with the support of Project Manager Miguel Suarez and Interior Designer Jamie Curtin.





## BRIDGEPORT RAILROAD STATION

**Location:** Bridgeport, CT  
**Completion:** 2011 (Design)

### DESCRIPTION

The City of Bridgeport requested an idea for changing the image of the current Railroad Station. The proposal was to remove the second floor and create a people-space on the roof. This would increase the transparency of the building and also be the only public space within the city with a view out to Long Island Sound.

This creates a “connectivity” with the harbor so often spoken about within the city. The existing “brutalist” concrete facade of the building would also be softened by a porcelain rain screen.



# INTERNATIONAL BROTHERHOOD OF ELECTRICAL WORKERS

**Location:** Monroe, Connecticut  
**Area:** 14,000 Square Feet  
**Completed:** 2012

## DESCRIPTION

The International Brotherhood of Electrical Workers retained Antinozzi Associates to design a new headquarters, including offices, classrooms, and a large meeting room. The new location presented a few challenges. Town approvals were strict with zoning regulations due to the narrow and sloping site. Creating a model provided the commissions the ability to visually understand the design far better than drawings could exhibit.

## FEATURES

The first floor of this two-story building features corporate offices that face the street, with five classrooms toward the rear of the building. The offices and main conference rooms are encompassed with frosted glass walls, which are transparent enough to let natural light in without compromising privacy. The second floor contains a large meeting room used for lectures and meetings. State-of-the-art audio and visual equipment were designed for optimal presentation viewing. The four colors used for the exterior - green, blue, red and yellow - represent the four colors that are inside of a metal armored cable. Inside the main hallway, mathematical formulas stand out against multi-colored blocking walls, bearing the same four colors. Metal ceiling grids follow the direction of the hallway.





# COOPER SURGICAL

**Location:** Trumbull, Connecticut  
**Area:** 77,700 Square Feet  
**Completed:** 2009

## DESCRIPTION

CooperSurgical first commissioned Antinozzi Associates in 2001 to relocate their 38,000 SF corporate headquarters from Shelton to Trumbull, CT. Over the next few years, the company continued to expand their services and their need for space. In 2007, we were asked back to assist in relocating their headquarters next door to 75 Corporate Drive, doubling their square footage since the first relocation.

## FEATURES

The facility needed to fit their vision of a state-of-the-art destination that would increase collaboration, unify departments, and attract/retain a talented workforce. Integrating with a rocky and curved site, the solution was a 3-story all-glass curtain wall to reflect the surrounding forest and sky. Blue-colored shadow boxes (from their logo color) add depth and create a 'home' for employees. Visitors are welcomed by a 2-story front entrance lobby which incorporates a 1½ story stone tile focal wall with LED light strips that change color and messages to both visitors and employees. Maximizing daylight into interior spaces, responding to workstation/office standards (created by our firm during programming), lighting, color/finishes, exposed ductwork, and sound-absorbing ceiling "clouds" all played critical roles in the design of this building solution.





## UNILEVER

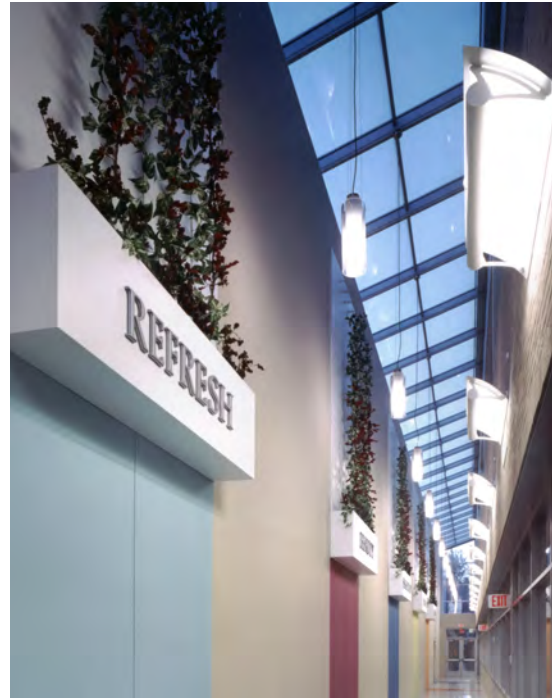
**Location:** Trumbull, Connecticut  
**Area:** Various Locations  
**Completed:** 2009

### DESCRIPTION

For 15 years, Antinozzi Associates was retained by Unilever, an international consumer products company, to complete architectural and interior design services within the company's Connecticut location. For their new 80,000 square foot facility at 40 North Merritt Drive, new space standards were implemented to develop color and finish material solutions to create the company's corporate identity. In tandem, we modified and implemented the space standards for 14,000 square feet of office space at Unilever's 40 South Merritt location.

Additionally, the firm also provided complete architectural and interior design services for the conversion of 63,000 square feet of warehouse space into a multi-use facility. The concept for this facility ultimately became the "Town Center" of the Unilever campus. The project features new labs, a fitness center, day care, consumer test center, and a new conference center.

As part of Antinozzi's ongoing services to Unilever, we recently completed a major upgrade to their food servery area at 75 Merritt Boulevard. The servery complied to a continued effort of implementing the company brand throughout their six building campus.



## WILTON CORPORATE PARK 60 DANBURY ROAD

**Location:** Wilton, Connecticut  
**Area:** 75,000 Square Feet  
**Completed:** 2009

### DESCRIPTION

Wilton Corporate Park is a 33 acre, 500,000 SF four-building Class A office park, comprised of two existing fully leased buildings at 50 and 64 Danbury Road and two additional Class A office buildings at 40 and 60 Danbury Road.

Antinozzi Associates was retained by Marcus Partners and The Davis Companies (formally Davis Marcus Partners) in 2006 to add a second office building at their Wilton Corporate Park property. This project encompassed master planning and architectural/interior design services to create a concept of a 75,000 SF, Class 'A', corporate office building. As part of this project, a 371-car parking garage expansion was added to the existing 237-car parking garage already on the Corporate Park campus. The building and garage expansions followed the overall campus design vernacular previously incorporated by our office. The large insulated perimeter window units that span from 2'6" to 9'6" above the floor to maximize views to the exterior and allow a greater amount of natural lighting.

This project became LEED Gold Certified in 2010 and was the first of its kind in Fairfield County.





## WILTON CORPORATE PARK 40 DANBURY ROAD

**Location:** Wilton, Connecticut  
**Area:** 150,000 Square Feet  
**Completed:** 2008

### DESCRIPTION

Wilton Corporate Park is a 33 acre, 500,000 SF four-building Class A office park, comprised of two existing fully leased buildings at 50 and 64 Danbury Road and two additional Class A office buildings at 40 and 60 Danbury Road.

Antinozzi Associates was retained by Marcus Partners and The Davis Companies (formally Davis Marcus Partners) in 2006 to add a new three-story office building and parking garage facilities at their Wilton Corporate Park property.

This project included master planning and architectural/interior design services to create the concept of a 150,000 SF, Class 'A', corporate office building. Amenities include a cafeteria, fitness center, and a new four-level parking garage attached by a pedestrian bridge to suit the occupying tenants' needs. The new corporate office building and above ground parking structure was completed in June of 2008.

Most notably, this project became LEED Gold Certified in 2010, the first of its kind in Fairfield County. Nearly 98% of the project's construction debris were recycled and diverted from landfill.





## WILTON CORPORATE PARK 50 DANBURY ROAD

**Location:** Wilton, Connecticut  
**Area:** 210,000 Square Feet  
**Completed:** 2006

### DESCRIPTION

Wilton Corporate Park is a 33 acre, 500,000 SF four-building Class A office park, comprised of two existing fully leased buildings at 50 and 64 Danbury Road and two additional Class A office buildings at 40 and 60 Danbury Road.

Antinozzi Associates was retained by Marcus Partners and The Davis Companies (formally Davis Marcus Partners) in 1999 for the architectural and interior design of a major office building renovation and a new 237-car parking garage at their Wilton Corporate Park.

The existing office building, originally occupied by PerkinElmer for use as offices & laboratories, was completely gutted to turn the 210,000 SF structure into a multi-tenant office building, complete with amenities including a full-service cafeteria/kitchen, fitness center, and mail room. The new garage was then connected to the building with a new pedestrian bridge and featured a glass stairway and elevator tower to address the client's safety concerns regarding visibility.

A few years later, we were asked back for major office building and parking garage expansions otherwise known as 40 and 60 Danbury Road.



## ADVANCED DERM CARE

**Location:** Danbury, Connecticut  
**Area:** 10,000 Square Feet  
**Completed:** 2006

### DESCRIPTION

Antinozzi Associates was retained by Advanced Derm Care to provide professional design services for the relocation of their practice from a multi-tenant medical building to a stand alone practice.

The design team was challenged with creating a new image for the practice. In collaboration with a group of six physicians, the design team successfully created an identity unique to Advanced Derm Care. Patient flow and HIPA compliance were key factors in designing this state-of-the-art skin care facility. Additional features included individual medical offices, a billing office, exam rooms, nurse's station, a surgical suite and lab, and a new spa.

This project was successfully completed within an aggressive time schedule which enabled the physicians to honor previous lease commitments.





## THE RYAN PARTNERSHIP

**Location:** Wilton, Connecticut  
**Area:** 100,000 Square Feet  
**Completed:** 2006

### DESCRIPTION

Antinozzi Associates was tasked with the design challenge of consolidating Ryan Partnership from its previous location in Westport, CT to Wilton, CT. Their existing operation consisted of space in four different buildings and we consolidated their operation into two floors totaling 100,000 SF. We provided complete architectural and interior design services including Programming, Schematic Space Planning, Design Development, Construction Documents and Construction Administration.

### FEATURES

The design goal of this marketing firm's consolidation was to create space that would conform to office space standards already in existence, yet create team spaces to increase open collaboration and the innovation of new ideas. The owners of the company envisioned a space to inspire creativity, yet maintain a sense of professionalism to appeal to their long-term clientele.

A large, open atrium space with a connecting stair to the mezzanine serves as a forum space for the company's "Town Meetings". Design and budget issues were ironed out quickly throughout the process with the collaboration of the Building Owner (our client for numerous years) and the General Contractor.





## TOWN OF TRUMBULL

**Location:** Trumbull, Connecticut  
**Area:** Various  
**Completion:** Ongoing since 2010

### DESCRIPTION

Awarded an on-call architectural contract with the Town in 2010 (and renewed in 2012), Antinozzi Associates' first assignment was to update the Five-Year Capital Improvement Plan for nine (9) major town buildings including two Town Libraries, the Town Hall and Annex, Police Headquarters Building, Senior Center, Public Works Yard, and the EMS Facility. The nine buildings totaled approximately 142,000 SF.

The update to this Capital Improvement Report resulted in the pressing need for facility improvements throughout the town leading to our on-call design services contract.

Since our on-call contract began, Antinozzi Associates has provided design and construction administration services for almost 20 projects, including window/door replacements, expansion studies, elevator replacement at the Town Hall, four town roof replacement projects, a swimming pool renovation project at Hillcrest Middle School, and several school roof/window replacement projects.

We also completed the conceptual design of a new 5,000 SF facility for the Trumbull Nature and Arts Center in 2010, anticipated to be located at Twin Brooks Park. The design study images were created for Town approval and to provide an idea of how the facility might look and function.



# STRATFORD FIRE HEADQUARTERS

**Location:** Stratford, Connecticut  
**Area:** 25,000 Square Feet  
**Completed:** 2005

## DESCRIPTION

The new Stratford Fire Headquarters tastefully reflects the colonial style exterior of the Town Hall located across Stratford High School. Designed to enhance the operations of the fire department and better serve the community a new centralized dispatch center was incorporated to allow dispatchers from all of Stratford's emergency services to be located in one place.

The new headquarters also features a kitchen, four large emergency vehicle bays, a meeting room, and space for crew shifts and department heads. All administration offices are located on the second floor while sleeping quarters with kitchen and lounge are located on the first floor.







## INSTITUTIONAL



Educational institutions sustain our culture. They are among the highest prized architectural commissions. Superior school design celebrates a community's commitment to its children by combining an expansive learning environment and feeling of belonging by utilizing both contemporary and traditional designs.

Below is a list of our most recent educational projects (since 1990) and the towns, cities, and institutions we have worked, or are working with successfully to provide feasibility studies, design, and/or construction of PreK-12 educational facilities.

\* *Included Feasibility Study*    \*\* *Feasibility Study only*  
 + *Over 50% New Construction*

**BRIDGEPORT**

Harding High School+  
 Roosevelt Elementary School+  
 Geraldine Johnson Elementary School+  
 Music and Arts Center for Humanity (MACH)\*\*  
 South End Elementary School  
 New Beginnings Family Academy\*  
 Read Elementary & Middle School  
 Park City, Franklin, Hooker, McKinley, Newfield, Skane, and Webster Schools (Windows)  
 Hall Neighborhood Center+

**DANBURY\***

District-wide School Reorganization/Renovation  
 Project from 1991 - 1994 included:  
 - 13 elementary schools  
 - 2 middle schools  
 - Danbury High School  
 - Alternative Center for Education  
 - BOE Central Administration Building

**FAIRFIELD**

Roger Ludlowe Educational Complex\*  
 Fairfield High School\*\*+  
 St. Thomas Aquinas School+

**GREENWICH**

Greenwich High School\*  
 North Mianus / Riverside Elementary Schools\*

**HAMDEN**

Eli Whitney Technical High School+  
 Spring Glen Elementary School\*\*+

**HARTFORD**

Connecticut AeroTech School, Brainard Airport+

**MANCHESTER**

Howell Cheney Technical High School+

**MERIDEN**

Orville H. Platt High School+  
 Thomas Edison Magnet Middle School+



**MONROE**

Chalk Hill Middle School\*  
 Jockey Hollow Middle School\*+  
 Fawn Hollow School  
 Stepney School

**NEW BRITAIN**

CREC Medical Profession and Teacher Prep MS/HS+

**NORTH BRANFORD**

North Branford Intermediate School

**OXFORD**

Oxford High School\*+

**REGIONAL SCHOOL DISTRICT 14 (BETHLEHEM/WOODBURY)\*\***

Bethlehem Elementary School  
 Mitchell Elementary School+  
 Nonnewaug High School

**RIDGEFIELD**

Scotts Ridge Middle School+

**SEYMOUR**

Chatfield-LoPresti Elementary School\*\*+

**STAMFORD**

Hart Elementary School+

**STRATFORD**

Eli Whitney Elementary School\*  
 Stratford Academy/Johnson House\*\*  
 Wooster Middle School\*  
 Stratford High School

**WEST HAVEN**

West Haven High School\*+

**WESTPORT**

Saugatuck Elementary School



# ORVILLE H. PLATT HIGH SCHOOL

**Location:** Meriden, Connecticut  
**Area:** 255,000 Square Feet  
**Scheduled Completion:** August 2017

## DESCRIPTION

The existing Orville H. Platt High School was built in the 1950's and in dire need of renovation and expansion to bring the school up to the standards of a modern, 21st century educational facility. Multiple design schemes were prepared and evaluated by considering factors such as the overall project cost the educational program, and the construction phasing impact on school operations, ultimately determining the final option to be developed.

## FEATURES

Given the extensive amount of demolition, renovation, and new construction that will be a part of this \$112M project, it will be built in four major phases beginning in 2013. This 1,200 student high school will feature a new two-story freshman academy and a three-story upper academy wing with a dramatic glass-walled library located to conveniently serve the needs of all the students. The existing gymnasium, auditorium, and pool spaces will be completely renovated while a new cafeteria is constructed to the rear of the school to take advantage of the vistas overlooking the athletic fields. Site improvements include revisions to the traffic flow to separate car and bus traffic, to direct students to two main entry points at the school, simplifying the arrival and departure process each day.



# ELI WHITNEY TECHNICAL HIGH SCHOOL

**Location:** Hamden, Connecticut  
**Area:** 231,000 Square Feet  
**Scheduled Completion:** 2016

## DESCRIPTION

As part of the State's plan to modernize the technical high schools, Eli Whitney will undergo comprehensive renovations to 140,000 SF of the existing facility, as well as receive a 91,000 SF addition to accommodate 800 students.

## FEATURES

The addition will feature a new two-story trade wing, configured and sized to meet current program and enrollment needs. The existing academic areas will be renovated to create new classroom space. The trade areas, currently located in the academic area, will be moved to a new trade wing. The overall design will allow for the trade and shop areas to be located in one continuous space. Additional features of the \$87M project include the central relocation of a new media center and auditorium addition, the renovation and expansion of administrative and student service spaces, and the reconstruction of the school's athletic fields and parking areas.

Though we worked with Viridian Energy & Environmental to create a sustainably-designed, LEED-certified facility, the client decided during the design phases that Eli Whitney would not be LEED-certified. The school is designed, however, to implement energy-efficient systems throughout the facility. This project is currently in phase two of construction.





# ROOSEVELT ELEMENTARY SCHOOL

**Location:** Bridgeport, Connecticut  
**Area:** 85,000 Square Feet  
**Scheduled Completion:** August 2015

## DESCRIPTION

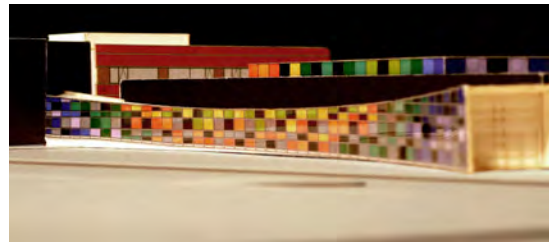
The new Roosevelt Elementary School was designed to replace the aging and outdated school building bearing the same name. The Roosevelt project is a result of the City of Bridgeport School Rebuilding and Modernization Program, of which Antinozzi Associates has designed two other school buildings as part of the program. This new school will sit on the same existing 5.3 acre urban block bordered by three city streets and residential properties. The site will be accessible from two of the three streets.

The new Roosevelt building will house 600 Students from Pre-K to 8th Grade. The \$34.8M construction budget includes demolition of the existing 105,000 SF school building. Antinozzi Associates led the effort that enabled the demolition and new construction of the project to stay within the established budget.

## FEATURES

Nestled in an urban neighborhood, the school is home to a racially diverse population. The theme of the school is "Paseo de los Ninos," which translates to "Passage of the Children." This theme is manifested in the sweeping corridor that serves as the main entrance, linking the commons building to the academic wing. The building also houses parent outreach and medical clinic facilities which can be entered independently from the facade fronting the street. Overall, the building will function as a new community center with multiple age play areas, a full gymnasium, a media center, a dance studio, and a cafeteria/performance arts space with a full adjacent kitchen. Also included is an exterior playing field and basketball court.

The Roosevelt School will receive a LEED Silver Certification from the US Green Building Council.



# HARDING HIGH SCHOOL

**Location:** Bridgeport, Connecticut  
**Area:** 144,000 Square Feet  
**Completion:** In Design Phase

## DESCRIPTION

The City of Bridgeport awarded this new high school project to Antinozzi Associates in 2011, which will accommodate an 800 student enrollment anticipated for the 2015-2016 school year. The school's age, outdated technology, insufficient classroom space, and poor ventilation throughout the facility required updating and improvement beyond simply renovation.

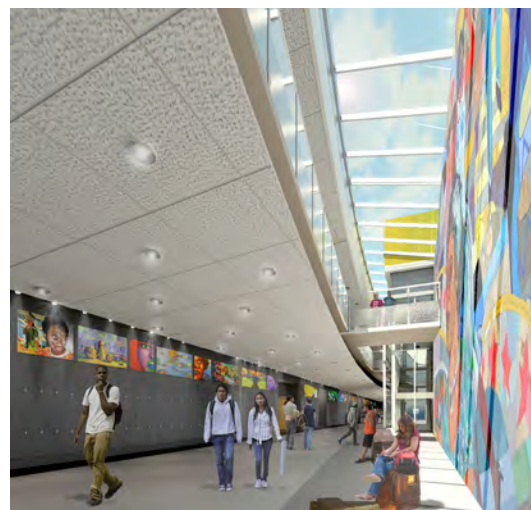
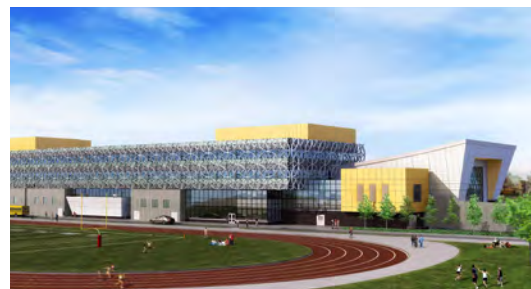
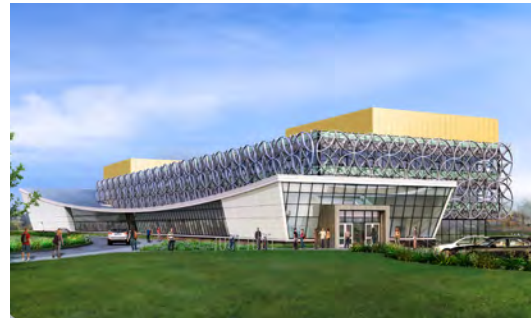
## FEATURES

The new 144,000 SF building will be constructed on a new site, and will include state-of-the-art computer labs, virtual and traditional science labs, a graphics lab, music rooms, art classrooms, a new mentor program area, and additional educational and athletic spaces. The \$78M school will also feature a state-of-the-art performance auditorium and media center spaces, as well as a fully functional mini-health services center. It will also be sub-divided into two academics; an approach that will ensure student's needs are appropriately met.

The very tight urban site, formerly occupied by a factory, required a four-story design solution. The upper two levels will be occupied by classrooms, and are arranged around a "Collabogora" (this term combines "collaboration" and the Greek word "agora"). The Collabogora is open between both academic levels, enabling light to flood the central portion of the building and create a visual connection between floors.

During the summer and non-peak school hours, the school will be used for after school programs, civic youth programs, community events, and other additional neighborhood events as necessary. Additionally, new state-of-the-art athletic fields will be constructed.

The school building and site will meet LEED Silver Certification, by the U.S. Green Building Council, ensuring the space is low maintenance and environmentally friendly.





# MEDICAL PROFESSION AND TEACHERS PREP MIDDLE/HIGH SCHOOL

**Location:** New Britain, Connecticut  
**Area:** 145,000 Square Feet  
**Completion:** June 2014

## DESCRIPTION

Drawing from nationwide research of medical education facilities, as well as input from the Capitol Region Education Council (CREC) Faculty and Administrative staff, Antinozzi Associates has designed this unique \$64.5M Medical Professions and Teacher Preparation (MP-TP) Magnet School. These curriculums will provide a 6th through 12th Grade teaching and medical program, allowing 700 students who are interested in these fields to be enrolled in either program. Additionally, a Pre-Kindergarten facility will be incorporated into the teaching program for school and staff use. The design provides CREC with a building uniquely tailored to facilitate the program's specific instruction in a real world setting within a flexible learning environment.

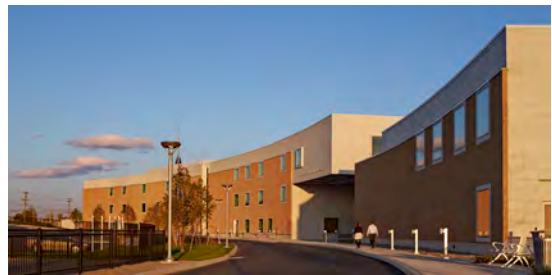
## FEATURES

Grades 6-8 will occupy the middle building level, with Grades 9-12 occupying the upper level. At the core of each level are three oval courtyards which enable a visual connection of all three floors, with additional outside views. The building shape also responds to the site, incorporating elements referencing both the medical and teaching professions. These elements include an apple orchard, a brick "skin" with incised random lines (suggestive of wrinkles), an exposed "organ-like" element (Lecture Hall), and white blocks in three different finishes to mimic a "complexion."

The school will have teaching spaces such as a Medical Simulation Instructional Space, a Medical Health Center, and specialized laboratories outfitted with state-of-the-art equipment for an interactive and student-centered educational experience. Similarly, the Lecture Hall will utilize technology to support distance learning instruction. Spaces within the school are flexible to meet current and future middle and high school programs.

## AWARDS

2014 Masonry Construction Project of the Year –  
Institutional Category



# GERALDINE JOHNSON ELEMENTARY SCHOOL

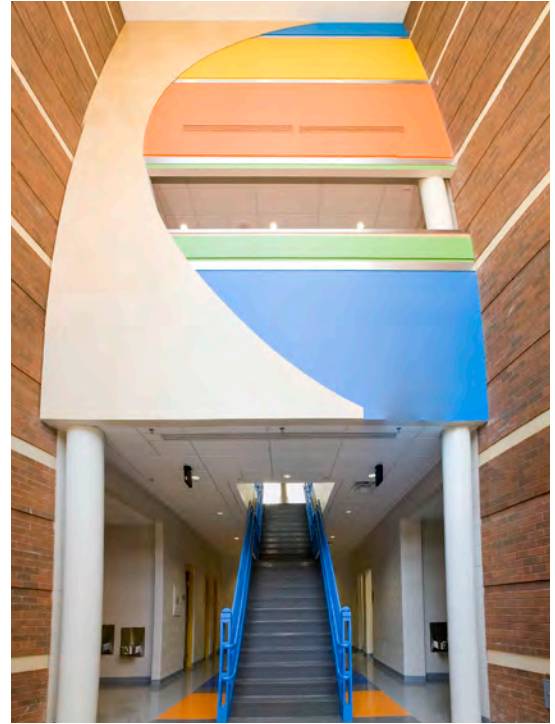
**Location:** Bridgeport, Connecticut  
**Area:** 105,000 Square Feet  
**Completed:** 2008

## DESCRIPTION

Architecturally, Geraldine Johnson Elementary School was designed in a series of layers. Housing 750 students in Grades PreK-8, the academic wing is the first layer, designed in the same scale and harmony to the surrounding neighborhood. The common wing, directly connected to the academic wing, includes the gymnasium, media center, cafetorium, and student service center.

Additionally, the new \$53.3M elementary school is designed to accommodate extensive community use after school hours. Security of the building is maintained through strategically-located doors. For instance, the gymnasium can be used without permitting access elsewhere in the school by closing the doors to the main corridor of the academic wing.

Initially, we worked with Viridian Energy & Environmental to create a sustainably-designed, energy-efficient facility. Although it was decided during the design phase by the client that the school would not be LEED-Certified, the school has been designed to implement energy-efficient systems throughout and meet LEED Silver requirements.





# OXFORD HIGH SCHOOL

**Location:** Oxford, Connecticut  
**Area:** 142,311 Square Feet  
**Completed:** 2007

## DESCRIPTION

This high school project was the culmination of several years worth of intensive community involvement, led by Antinozzi Associates to expand and enhance the public school system in the Town of Oxford. Oxford High School was designed to house 750 students (with expansion to 800 students), and revolved extensively around the need to use portions of the facility for community purposes. The \$44M budget also included a natatorium and core facilities for future expansion.

## FEATURES

The Oxford High School design shows the influence of the Amsterdam School after a design study trip to the Museum Het Schip in 2005. The design concept revolved around the idea of expressing the interior spaces to the exterior by the use of different bricks and corrugated metal panels, three-dimensionally offsetting masses and wall skins. Differentiating colors and textures announce the function of the walls and volumes within the interior spaces.

The school building is located on a site that takes advantage of distant vistas extending across Long Island Sound. The library occupies the upper level of the rotunda above the main entrance at the building's center. Its prominent location and transparency serve as a cultural beacon representing the school's high academic standards. The auditorium and main gymnasium flank the rotunda lobby, making this a civic destination as well as an educational facility.

When Livingston Taylor performed in the auditorium in 2008, he commented to the audience on what wonderful spaces the new auditorium and media center were, referring to the woodwork and architecture. The air was running and it was absolutely quiet. He said, "What is so special, is that this hall is so quiet. Whoever did this, did it right!"



## AWARDS

2008 Community Impact Awards - Real Estate Exchange

2008 Featured Auditorium Design -  
SchoolDesigner.com (August Issue)

2008 Merit Award for Engineering Excellence -  
American Council of Engineering Companies of Connecticut

2008 International Masonry Institute-  
N.E. Regional "Golden Trowel" Award



# HOWELL CHENEY TECHNICAL HIGH SCHOOL

**Location:** Manchester, Connecticut  
**Area:** 190,000 Square Feet  
**Completed:** 2007

## DESCRIPTION

In 2002, Antinozzi Associates was commissioned by the State of Connecticut Department of Public Works for the design of a 100,000 SF academic addition and major renovations to 90,000 SF of existing space for this 600 student technical high school.

## FEATURES

During the design phase of this \$43M project, we developed a unique, innovative solution that reduced moving costs, improved site logistics, and lowered overall construction costs. It allowed for the project to be completed in three phases while students occupied the existing school. Our design solution and phasing recommendations were overwhelmingly accepted and approved by the Regional Vocational Technical School Committee.

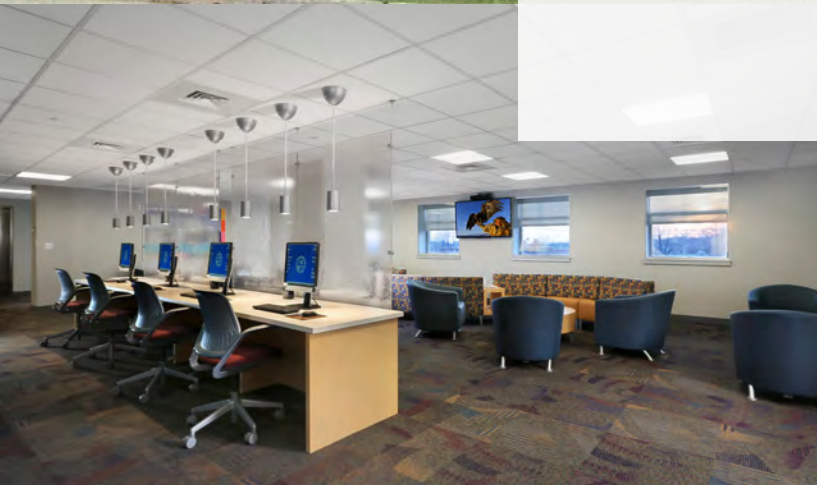
The new addition encompassed 12 new classrooms and 10 new shop areas offering instruction in a variety of technical trades. The existing classrooms, administrative space, gymnasium, cafeteria, and library all underwent major renovations.







## HIGHER EDUCATION



While new technology is used to design more effective schools, we must also remember that the school building itself needs to facilitate bringing the best technology has to offer into any college or university classroom. Schools should attempt to have many of the qualities of home: comfort, security and warmth. It should also have inspirational qualities to uplift and cultivate a creative attitude.

# UNIVERSITY OF BRIDGEPORT: SCHOOL OF BUSINESS

**Location:** Bridgeport, Connecticut  
**Area:** 71,000 Square Feet  
**Completed:** 2014

## DESCRIPTION

In 2013, Antinozzi Associates was commissioned to design an addition with a new front entry and canopy. The glass façade on the front and two sides bring natural light into the lobby during the day while the low-hanging pendant light fixtures emit a warm glow at night. Although the entry is newly constructed, the yellow details and rectangular brise-soleil from the existing structure was integrated to implement cohesion of old and new.

## FEATURES

The high floating ceilings contribute to the openness of the space and can be utilized for meetings, studying, or relaxing. This multi-functional room contains soft seating and flexible furniture to enhance collaboration amongst students. For a more intimate setting, the paneled walls perfectly frame the lounge area located on either the side of the room which was part of the building's former lobby. The entry is also a transition area as it connects to the lecture halls, Dean's Suite, and classrooms.

Included in this renovation were the toilet rooms, existing lecture halls, student center spaces, and modifications to the existing suite.

The new improvements and entry can now be appreciated by students and faculty with its completion in July for the start of the 2014-2015 academic year.





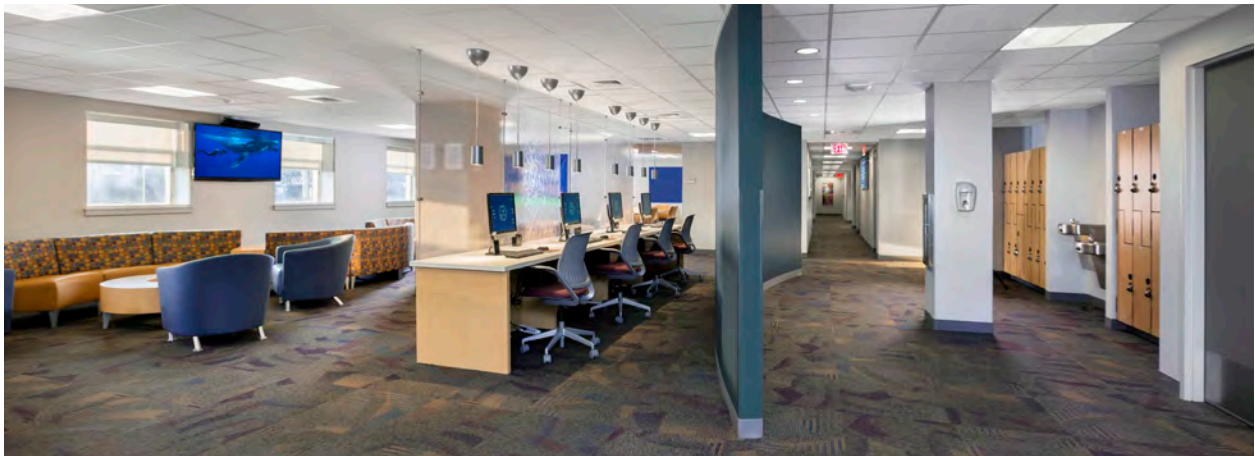
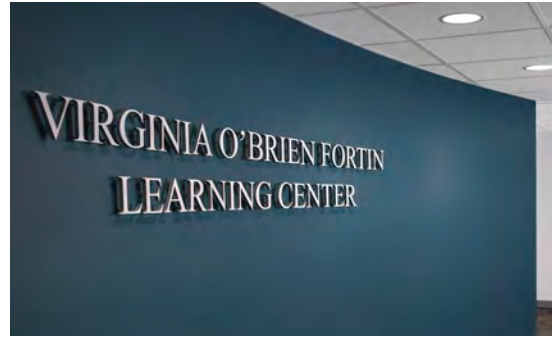
# ST. VINCENT'S COLLEGE SCHOOL OF NURSING

**Location:** Bridgeport, Connecticut  
**Area:** 15,000 Square Feet  
**Completed:** 2013

## DESCRIPTION

St. Vincent's College is a Health Science focused college affiliated with the St. Vincent's Medical Center. The college offers both two and four-year degrees, as well as online continuing education to fulfill a RN to BSN degree. Antinozzi Associates was hired by the college to conduct existing building surveys of three properties; the existing college, an off-site classroom, and a future expansion property. The three buildings were evaluated for space opportunity, overall building serviceability, and future expansion potential. The final building surveys incorporated St. Vincent's College's plans for student, program, and staff expansions.

As a result of the building surveys, Antinozzi Associates designed a 15,000 SF expansion to facilitate their expanding student enrollment and addition of two new programs. The \$4.5 million project includes specialized, standard, and non-traditional classrooms, a new student center with kitchenette, private and group student meeting spaces, built-in lockers for the students, and an expanded faculty suite with meeting room. Attention was directed toward the student's perspective which included branding, finishes, and furniture. Additional infrastructure items included mechanical upgrades and site issues such as parking, pedestrian access, and a new roof.



# UNIVERSITY OF BRIDGEPORT: COX STUDENT CENTER

**Location:** Bridgeport, Connecticut  
**Area:** 6,400 Square Feet  
**Completed:** 2012

## DESCRIPTION

The John J. Cox Student Center is a renovation of an existing space designed as an oasis for students and staff to study, collaborate, and entertain. The existing conditions were demolished to the bare bones, with the exception of a student graffiti wall, and the concrete structure now acts as the main ceiling throughout the space.

## FEATURES

An array of ceiling products create excitement, acoustical advantages, and an industrial, urban feel with varying heights and shapes relating to the many different student spaces for dining, technology, performances, and soft seating. This space is greatly used by commuter students and is open after hours. A food court, book store, convenience store, technology pods, and a stage performance area with a bar can be utilized by students between classes, or for evening events.

Antinozzi Associates also renovated the faculty dining room, or the “Great Room”, which included flooring, ceiling, lighting, and seating. The distinct patterning and floor layout of the bright colored tiles creates an inviting 400-seat capacity space.





# UNIVERSITY OF BRIDGEPORT: FONES SCHOOL OF DENTAL HYGIENE

**Location:** Bridgeport, Connecticut  
**Area:** 22,000 Square Feet  
**Completed:** 2008

## DESCRIPTION

The Fones School of Dental Hygiene (FSDH) at the University of Bridgeport utilized the services of Antinozzi Associates to determine if the renovation and relocation of the clinic to the Warner Hall Health Science Center was more cost effective than to renovate the clinic in its current location in Eleanor Dana Hall. The determination to relocate the existing space achieved many goals, which include the following: the consolidation of its community clinic functions into one building, the ability for students and clients to interact in a more office-like setting, and the opportunity for students to learn on modern, technologically up-to-date, appropriate equipment, easing their transition into the workforce. Ultimately, this relocation has attracted more students and clinical patients to the School.

In addition, Warner Hall required minor renovations to be compliant with ADA regulations. The floor plan layout also allows for better privacy between the clinic's 30 operatories while providing visual supervision by the instructors.



# UNIVERSITY OF BRIDGEPORT: MAGNUS WAHLSTROM LIBRARY RENOVATION

**Location:** Bridgeport, Connecticut  
**Area:** 23,000 Square Feet  
**Completed:** 2008

## DESCRIPTION

The Magnus Wahlstrom Library is referred to as the “academic and physical heart of the campus”. In 2007, Antinozzi Associates was requested to design the renovations to the library in response to the University’s need to create an Information Commons for the campus. The library remained on the first floor within the existing structure.



## FEATURES

The goal and objective of the design was to introduce more desktop computers, create team meeting areas (including Smartboard technology), assign designated areas for laptop use, have self check-out stations for library materials, and walk up email and internet access stations. A circular Research Theatre is included as well.



A café, including lounge areas for relaxing and studying, was designed with acoustical isolation in mind, even though it was located within an open environment. A small art gallery was also incorporated to enhance campus life for the students. Study rooms on the 2nd and 4th floors were also created to compose an all-inclusive learning environment.





# JEWISH THEOLOGICAL SEMINARY LIBRARY STUDY

**Location:** New York, New York  
**Area:** 60,000 Square Feet  
**Scheduled Completion:** TBD

## DESCRIPTION

The Jewish Theological Seminary (JTS) is one of the world's leading centers for Jewish learning and its world-class library research is recognized as one of the greatest of its kind in the country. Additionally, the JTS offers undergraduate, graduate, and professional degrees through its five schools and offers enriching programs for the Jewish community in the United States, Israel, and around the world.

Antinozzi Associates was hired by the JTS to develop an architectural concept illustrating a vision for major improvements to the multi-level library. The final rendition will include rendered floor plans and interior views.

## FEATURES

Our main goal is to create a high-tech, user-friendly environment for students, employees, and visitors of the Library. Main features include an exhibition space, coffee shop, multi-functional spaces, a reading room, and a social space for students called "Beit Midrash", or "House of Interpretation or Learning".



# CONNECTICUT AEROTECH SCHOOL

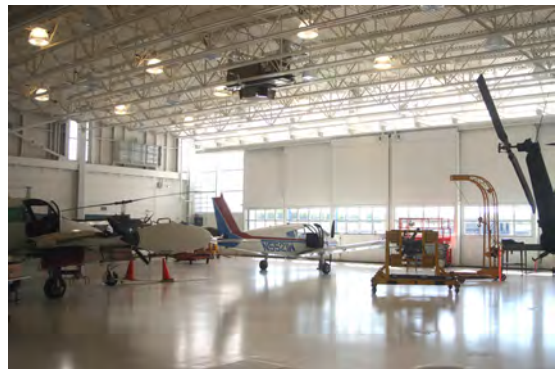
**Location:** Hartford, Connecticut  
**Area:** 29,000 Square Feet  
**Completed:** 2008

## DESCRIPTION

The Aviation Technician School, previously located at H.H. Ellis Technical High School in Danielson, moved into a larger, state-of-the-art facility at Brainard Airport. This location was selected due to its central location in the State, which both minimized commute time and provided a much-needed career path opportunity for inner-city youth and students that attend.

## FEATURES

This facility, renamed the Connecticut AeroTech School, houses an FAA-certified training program that prepares students for the rigorous FAA standards of airframe and power plant mechanics. The new building includes a 100' clear span, 14,000 SF aircraft hanger capable of containing transport category aircraft, vastly increasing the program's training capacity. The school has become an FAA-certified repair station for both general and corporate aircraft, and houses three classrooms, administration and support spaces, and 8,000 SF of shop and engine assembly areas. The area includes two engine test cells, allowing students to safely run and test the engines they have assembled as part of their education.







## FINANCIAL



Financial institutions are important community resources. Successful design emphasizes brand identity and quality products and services. We create unique design solutions to implement the bank's business model and vision.

## WEBSTER BANK

**Location:** Connecticut, New York,  
Rhode Island, and Massachusetts  
**Area:** Approx. total 350,000 Square Feet  
**Completion:** Ongoing

### DESCRIPTION

In 1996, Webster Bank (one of the largest Connecticut-based banks) retained Antinozzi Associates to provide interior design and planning services for the design of a technologically-based prototypical branch.

The first project was a retail-type branch located at the new Brass Mill Center Mall in Waterbury. This design was driven by the bank's growth and expansion of services in internet/phone banking and ATM services. Along with this prototype, our firm standardized the bank branch interiors - furniture systems, color schemes, and layout - in addition to incorporating the latest trends in banking services.

### BRANCH EXPANSION: CT

In 1998 alone, Webster Bank greatly expanded their market location outside the Hartford and Waterbury regions and converted or renovated 35 branches within 18 months. Since 1998, we have renovated over 120 branch locations.

### BRANCH EXPANSION: NY, MA AND RI

In 2002, we designed a prototype branch model that would brand a new image for Webster Bank. Since successfully opening the first prototype branches in Westchester County in 2003, 30 other branches have been built in New York, Massachusetts and Rhode Island. Creatively designed and specific to high functionality, the design allows for local adaptability in diverse regions with varying facade restrictions from town to city.

### SERVICES

Our services not only include architectural and interior design - new and renovated - but site feasibility studies, obtaining town approvals and permits, project team coordination, and construction administration.





# SAVINGS BANK OF DANBURY

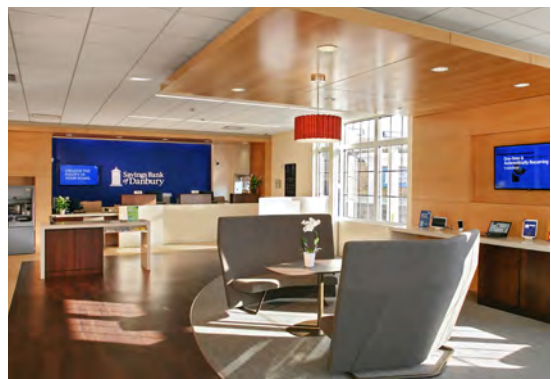
**Locations:** Danbury & New Milford, CT  
**Area:** 7,000 Square Feet  
4,600 Square Feet  
**Completion:** 2006 & 2014

## DESCRIPTION

After designing several branch renovations for the Savings Bank of Danbury in 2004, Antinozzi Associates was invited back to design a new signature branch with executive offices, lending offices, and a training room in their home city of Danbury. The bank executives commissioned our office to create a building design that would be well-recognized and appreciated by the local community and the City. Antinozzi Associates came up with a modern design solution that cleverly used traditional details to signify the longevity of the bank's history in the area, coupled with contemporary details.

The construction of this new branch building was completed in July 2006 and has received rave reviews from the client and customers alike. An exhibit of warmth, quality, and customer service is displayed through the incorporation of a working fireplace that only adds to the 'living-room' style welcome.

Recently, Savings Bank of Danbury has requested our firm to design a new 4,600 SF branch in New Milford. The new building will house a branch of about 1,800 SF with the remaining space allocated for office use. The branch will be completed in 2014.



# QUINNIPIAC BANK AND TRUST

**Location:** Hamden, Connecticut  
**Area:** 10,200 Square Feet  
**Completed:** August 2013

## DESCRIPTION

Quinnipiac Bank & Trust, a state-chartered, full-service commercial bank, was first conceived in 2005 as a new, independent institution focusing on individuals and local businesses in the Greater New Haven community. Antinozzi Associates was brought on board in 2007 to create the first conceptual design of their Corporate Headquarters and first bank branch in Hamden.

The new bank building, completed in 2013, consists of 10,200 SF of corporate offices and retail bank facilities. The first floor of the building houses the retail branch functions, including a drive-up teller and 24 hour vestibule ATM, while the second floor houses corporate offices. The lower level includes storage, mechanical rooms, and a lounge.

The exterior is clad with a thin-brick veneer system, EIFS, and asphalt shingles on the main hip roof. The design was developed to create a notable presence on the main street, relating to many other brick buildings in the area, including a newly-renovated Town Hall.





# NAUGATUCK SAVINGS BANK

**Locations:** Meriden and Waterbury,  
Connecticut

**Area:** 3,300 Square Feet

**Completion:** 2010 / 2012

## DESCRIPTION

As a result of a major outreach effort by our firm in 2009 to financial institutions throughout Connecticut, Antinozzi Associates was approached in 2010 to provide architectural and interior design services for a new 3,300 SF standalone building located in Meriden, CT. The building design entailed a simple single-story structure with a wood truss roof, steel stud exterior walls, and brick veneer. An attached three-lane drive-up canopy was also incorporated.

Due to the outstanding performance of our staff on this project (even before construction was finished), we were once again asked to provide design services for another new bank branch totaling 2,500 SF located in Waterbury. In addition, as we commonly do with projects of this size, we assisted the property Landlord and the Landlord's civil consultant with all of the required zoning approvals. With construction complete on both branches, the client could not be happier with the outcome of both facilities.



# PEOPLE'S UNITED BANK

**Location:** Various Locations in Connecticut  
**Area:** 450 - 6,000 Square Feet  
**Completed:** 2011

## DESCRIPTION

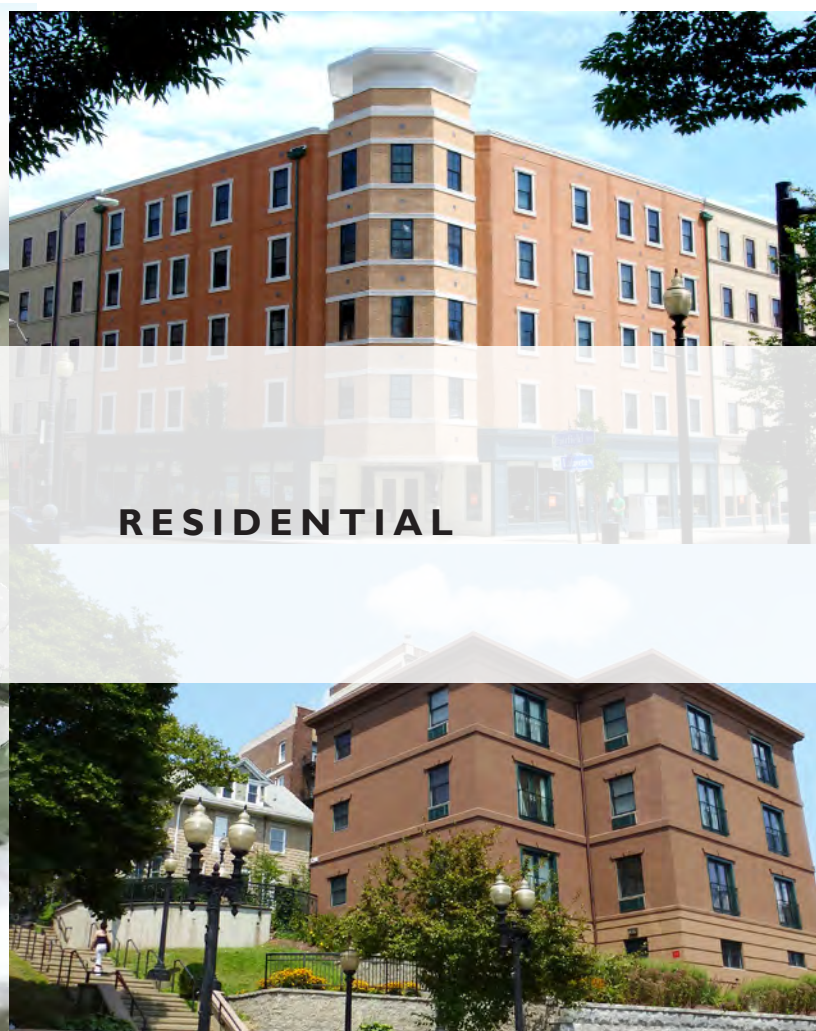
The professional relationship between Antinozzi Associates and People's United Bank, formerly People's Bank (and one of the largest Connecticut-based banks), dates back to 1979. Since then, we have provided comprehensive architectural and interior design services for regional headquarters and various branch buildings totaling over 500,000 square feet.

## BRANCH EXPANSION

Our on-call design services for People's United Bank encompassed a major branch expansion and branding program with the bank for several years. The goal of the program was to standardize the branches so they would all conform to a model branch developed jointly by the Bank and our firm. This standardization included not only freestanding branches, but the implementation of banking services in over 70 Stop & Shop branches throughout Connecticut. In addition, we established design criteria for the first financial service center located in Trumbull, which was soon followed by two other centers in Torrington and Southington.







## RESIDENTIAL

Housing design was a large part of our design work in the 1970's and 1980's. However, within the last few years, we have become more heavily involved with multi-family housing design—for private clients and public agencies—both urban and suburban settings.

# STRATFORD HOUSING AUTHORITY

**Location:** Stratford, Connecticut  
**Area:** Various  
**Completion:** Ongoing  
**Design:** Ongoing  
**Construction:** Ongoing

## DESCRIPTION

The Stratford Housing Authority has been an 'on-call' client of Antinozzi Associates for almost thirty years with numerous projects ranging from small renovation and upgrade projects in the residential units (interior door/frame replacements, new bathrooms, water heater replacements, kitchen upgrades) to larger projects (a new administration building, roof replacement, vinyl sliding replacement, window replacement). Several complexes where much of this work has taken place include Elm Terrace Apartments, Robert F. Kennedy Apartments, Shiloh Gardens, Hearthstone Apartments and Baldwin Apartments.

In 2008, we completed new bathroom and kitchen renovations, roof and window replacements, and siding for Hearthstone Apartments, with only one change order requested by the owner for \$1,576 for a \$688,000 contracted amount. We have recently completed kitchen renovations roof replacement projects at two other residential complexes.

In late 2012, we were awarded the design work for the Authority's Meadowview Manor \$5M facility improvements, to be completed over the next year. These services include exterior and interior renovations, such as bathroom and kitchen renovations, and door, window, roofing and siding replacements.





# HOUSING AUTHORITY OF THE CITY OF BRIDGEPORT

**Location:** Bridgeport, Connecticut  
**Area:** Various  
**Completion:** Ongoing  
**Design:** 2009 - Present  
**Construction:** Ongoing

## DESCRIPTION

Awarded an on-call contract for design services in May 2009, our firm's first task was to provide condition survey reports and cost estimates for various properties throughout the City of Bridgeport under consideration for purchase by the Authority. This effort is part of the Authority's strategy to replace former public housing units which were abandoned and demolished. Antinozzi Associates compiled a team consisting of architects and a cost estimator to inspect numerous residential properties, identifying items requiring repair/replacement and compiling cost estimates for the work.

In addition, we completed two feasibility studies as part of this contract. One was planned to be a conversion of an abandoned convent constructed in 1931 into an 8-unit apartment for victims of family abuse. The other was for an existing building that would include six 2 and 3 bedroom housing units plus a health clinic.

In 2010, we did interior stair renovations for Charles F. Greene Homes on Highland Avenue. The complex consists of 270 living units in five, 7 story buildings. We were brought on to repair the two stairwells that are in each building. In 2012, we completed roofing replacements for the Harborview Towers complex on Washington Avenue. The complex is a three winged, 14-story hi-rise, with 240 units.

Our on-call contract was recently renewed through 2015.



## GOLDEN HILL DEVELOPMENT

**Location:** Bridgeport, Connecticut  
**Area:** Various  
**Completion:** 2007 (First Design)  
**Completion:** 2013 (Phase I)

### DESCRIPTION

Since 2006, Antinozzi Associates has been retained by the Kuchma Corporation for various on-call design services, including residential units and businesses in the heart of downtown Bridgeport.

In 2007, Kuchma asked Antinozzi Associates to provide conceptual designs for a potential residential building in the Golden Hill section. This design contained fifteen (15) stories of luxurious living space with great city views. The modern (and green design) would have added to the ever-growing redevelopment of downtown Bridgeport. *(Photo of rendering at top right)*

Recently, we were approached again to develop another design for the Golden Hill development. There are two phases to this development: Phase I are mixed-use developments in construction, with completion in 2013. This phase comprises of 12 market-rate, 614 SF apartments on Broad Street, with a beautiful tree-lined pedestrian linkage within the city and easy access to theatres, restaurants, and shops. *(Photo of rendering below)*

Phase 2 includes the development of fifty (50) more residential units, a senior center, a restaurant, and a fitness center. *(Photo to the right)*





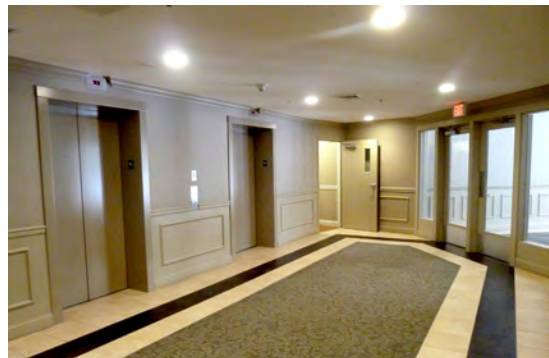
## 323 FAIRFIELD AVENUE: THE SHOPS & RESIDENCES AT BIJOU SQUARE

**Location:** Bridgeport, Connecticut  
**Area:** 126,700 Square Feet  
**Completed:** 2010

### DESCRIPTION

The Shops and Residences at Bijou Square at 323 Fairfield Avenue is a five-story, mixed-use, private development project in the City of Bridgeport. The entire horseshoe-shaped building encompasses a total of 126,700 SF comprised of 9,400 SF of retail on the first floor. The remaining 117,300 SF consists of one- (1) and two- (2) bedroom units ranging from 800 SF to 1,250 SF. Access to the City's Central Business District, retail shopping, entertainment, bus/railroad transit station, and major highways are all within close proximity of the development.

The structural framing for this project consists of a load-bearing, pre-fabricated, metal stud wall system. The entire building is fully sprinklered. The design also allows for controlled security access to the property and a private outdoor courtyard available to residents.



## CONCEPTUAL DESIGN

### CLIENT'S VISION

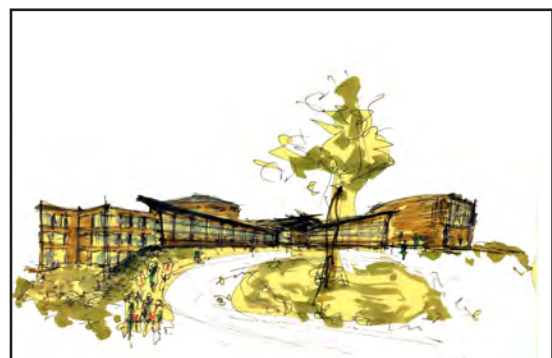
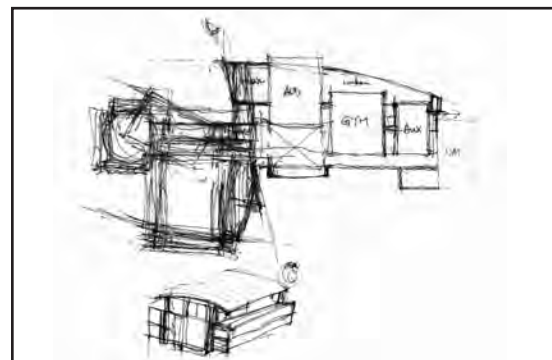
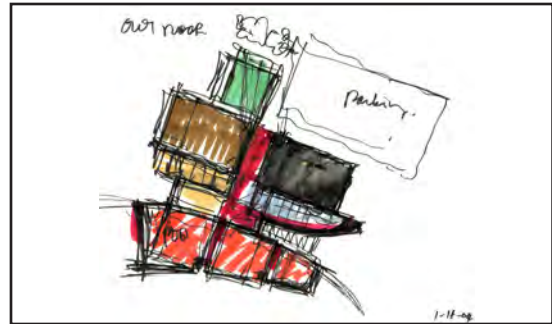
It all starts with a Client who has a Vision - whether it is to build a new facility, renovate an existing building, reallocate program space, or simply plan for future expansion. This is when Antinozzi Associates is brought on board to facilitate, develop, and create the idea into physical form that fulfills specific, tangible goals. Once part of the team, we instantly gather information - in many different methods - so we can fully understand the client's needs and create a successful, cost-effective, and sustainable design solution. As the project moves forward, more information is gathered through collaboration with the client, design and/or construction team, and all the entities it takes to put a project together. The closer the design process is completed, the more formal our efforts become until the design is complete and construction starts.

### OUR PROCESS

Our primary role as Architects, Interior Designers, and Planners is to create the form and function of a building structure and the spaces within. To get there, we must consider what guides each design. What philosophy connects each of the numerous design decisions we make? The character of the places and spaces in which we teach our children, shelter our families, shape our neighborhoods, employ our workforce, or market to consumers affects the success of our communities. Design should have inspirational qualities to uplift and cultivate a productive and comfortable society. Only by listening to our clients and probing numerous resources can we express these diverse needs as physical, aesthetic, and spatial solutions.

### FIRST STEP: CONCEPTUAL DESIGN

From a simple diagram created in the early stages of this process, the design of a building or space develops. What we do as design leaders all starts with a Client and a Vision ... and sometimes a sketch on a paper napkin ...





# CONCEPTUAL DESIGN

